

Model N53108 Namur Solenoid

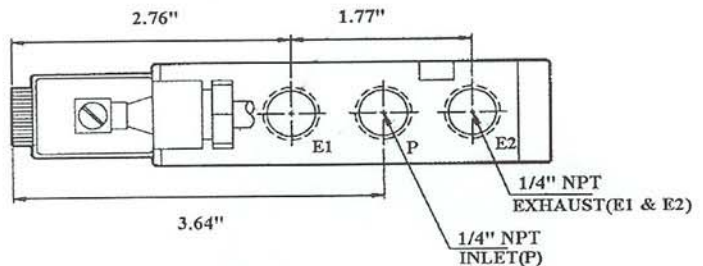
Features:

High Flow Capabilities
 - Cv 1.8
 Wide Temperature Range
 -20 F to 140 F
 Manual, Locking Override
 LED Power Indicator
 Namur Mount
 Anodized Aluminum
 Construction
 Pressure: 20 to 120 psig



Electrical:

Voltages: 12 VAC, 12 VDC, 24VAC
 24 VDC, 110 VAC
 Molded Coil:
 120 VAC 4.8 VA
 Response: .05 sec



**3 - Way's Available
 For Spring Return**

Note:

4 - way solenoids are often used with spring return actuator to control the air entering the spring chamber, and to assist in the actuator spring rotation.

