

HATFIELD AND COMPANY

Valve & Automation Products



Hatfield and Company is a distributor and manufacturer's representative of leading technical products and solutions that help our customers improve efficiency and quality, and save money. We specialize in solutions for filtration, instrumentation, valves, safety, and other piping related products. We consider our customers to be our partners and we are committed to being fair, ethical, and honest... every time.

Hatfield and Company currently has Sales Offices located throughout the United States in Illinois, Indiana, Louisiana, Oklahoma, and Texas. We also service and provide technical products and solutions for customers in Alabama, Arkansas, Iowa, Kansas, Michigan, Mississippi, Missouri, New Mexico, Ohio, and Tennessee.

Corporate Office

2475 Discovery Blvd
Rockwall, TX 75032

972.288.7625
972.289.9063 fax

1, 2, 3 piece ball valves



Triac
***Worcester Controls**
VSI
SVF Flow Controls
SCV
Global Valve & Controls
Force Energy Products

- Carbon steel, Stainless Steel, & Brass
- 1-piece NPT, BW, & SW 1/4" to 2" 2000 psi
- 2-piece NPT, BW, & SW 1/4" to 3" 1000 psi
- 3-piece NPT, BW, & SW 1/4" to 4"

Butterfly Valves



VSI
Triac
***Durco**
Value Valve
ABZ Valve
***SAMSON-PFEIFFER**
***SAMSON- LEUSCH**

- Cast Iron, Ductile Iron, Carbon Steel, Stainless Steel
- 1 1/2" to 48" Resilient Seated Wafer, Lugged, & Double Flanged Design
- High Performance Class 150 to 600 Firesafe & metal seat design
- PTFE Lined
- Double and triple offset

Unibody & 2-piece floating ball valves



Triac
***Worcester Controls**
VSI
SVF Flow Controls
Global Valve & Controls
Force Energy Products
***SAMSON - PFEIFFER**

- Carbon steel & Stainless steel
- 1/2" to 12" Class 150 to 600
- Full & Reduced Port

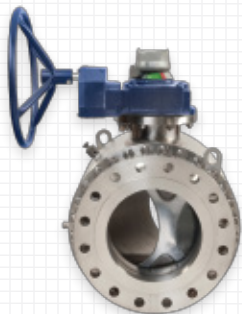
Safety Relief Valves



Leser

- ASME/API Approved
- Pilot Operated, Modulate Action
- Sanitary & Critical Service

Val-Matic QuadroSphere



- ASME Pressure Classes: 150-2500
- Size Range: 2 NPS – 24 NPS
- Forged Body & Ball Construction
- Self-Cleaning Seats
- Self-Flushing Contoured Ball Design
- Standard Design API 6D/ASME B16.34
- Certified to API 607, Fire Test Standard
- Meets: API, ASME/ANSI, BS, ISO, MSS and NACE

SAMSON



- Valves: SAMSON Group Globe, Butterfly, Ball, Segmented ball, Rotary Plug, Angle, Microflow, and 3-way
- SAMSON: Positioners, I/P Transducers, & Controllers
- Actuators: Diaphragm and rack & pinion
- SAMSON: Steam conditioning valves
- Service and repair

3-Piece Trunnion Ball Valves

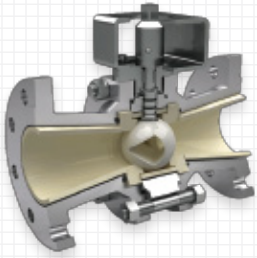


Triac
SCV
Global Valve & Controls
Force Energy Products
***SAMSON - STARLINE**
***SAMSON - Ringo**

- Carbon steel & Stainless steel
- 2" to 48" Class 150 to 2500
- Full & Reduced Port
- API 6D Class 150 -2500
- API 6A Class 2000 – 15,000

* Please check with your Hatfield Sales Representative to see if we have this product line in your territory.

Specialty Valves



Triac
***Worcester Controls**
***Automax**
SVF Flow Controls Global
Valve & Controls PBV
Union Tech Baker SPD
***SAMSON**
***SAMSON-Cera System**
***SAMSON- STARLINE**
***SAMSON - Ringo**
Hayward

- Severe Service metal seated ball valves
- 3, 4, & 5 way C/S & S/S ball valves
- Fully lined ball valves
- 1/2" to 2" 6000 psi ball valves
- Characterized & V segmented control ball valves
- Resilient seated & high performance 3 way butterfly valve assemblies
- Sanitary tri-clover & tube end ball valves
- Actuated wellhead control valve/choke ANSI 600 to 2500
- Axial flow control valves
- Ceramic valves
- Hygienic and aseptic for food, beverage and pharma
- Cryogenic Valves
- PVC & CPV ball, butterfly & check valves

PTFE & PFA Lined Valves



***Durco**
***SAMSON - PFEIFFER**

- Sleeve Lined & Fully Lined 1/2" to 18" Class 150 to 300
- Two Way, Three Way & Severe Service
- Lubricated 1/2" to 36" Class 150 to 2500
- PTFE and PFA lined globe, butterfly, and ball valves

Pressure Regulators & Control Valves



Marsh Bellofram

***Cashco**
***SAMSON**

- Back Pressure & Pressure Reducing Valves
 - Gas & Tank Blanketing Valves
 - Low & High Flow Pressure Reducing & Control Valves
 - Self Regulating Temperature Control Valves
 - Sanitary Control Valves, Steam Traps, Ball Valves, Pressure Reducing, & Check Valves
 - Self operated temperature, pressure, and differential pressure valves
- *North & West Texas only*

Gate, Globe, & Check Valves



Durabla
SCV
Warren Alloy
***Vogt**
Force Energy Products
***SAMSON - Ringo**

- Carbon steel & Stainless Steel
- Gate Valves: Cast Steel, Bolted Bonnet, & Forged Class 150 to 2500
- Check Valves: Piston, Inline, & Swing Checks Class 150 to 2500
- Globe Valves: Cast Steel, Bolted Bonnet, & Forged Class 150 to 2500

Actuation & Accessories

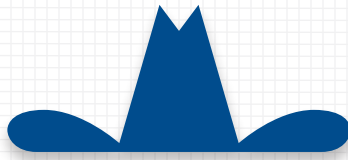


Triac
VSI

***Worcester Controls**
***Automax**
SVF Flow Control Products
Phipps Manufacturing, Inc.
Versa Valves
Asco
Moniteur
Marsh Bellofram
***SAMSON**

- Nema 4, 4X, 7, & 9 Electric Actuators up to 30,000 in/lbs.
- Pneumatic Rack & Pinion actuators up to 30,000 in/lbs.
- Pneumatic Scotch Yoke actuators up to 1,600,000 in/lbs.
- Positioners, Limit Switches, Solenoids, Declutch Gear Overrides
- Custom Mounting kits
- I/P Convertors
- Smart positioners - HART, Foundation Fieldbus, Profibus

* Please check with your Hatfield Sales Representative to see if we have this product line in your territory.



HATFIELD AND COMPANY

BRANCH OFFICES

Amarillo

3131 Bell St, Suite 100A-9
Amarillo, TX 79106
806.358.7686
806.358.0890 fax
800.400.4282

Austin

13706 Research Blvd, Suite 211H
Austin, TX 78750
512.918.9663
409.866.3514 fax
800.879.9191

Beaumont

7905 Gladys Ave, #100
Beaumont, TX 77706
409.866.6467
409.866.3514 fax
800.584.6021

Chicago

1999 W. 75 St. #202
Woodridge, IL 60517
630.427.1023
630.427.1865 fax
888.388.7724

Clute

240 Commerce
Clute, TX 77531
979.265.9327
979.265.0957 fax
800.445.5744

Corpus Christi

4531 Ayers St, #232
Corpus Christi, TX 78415
361.853.5200
361.853.9090 fax
800.490.4963

Dallas (Rockwall)

2475 Discovery Blvd
Rockwall, TX 75032
972.285.0115
972.722.0112 fax
800.879.9191

Gonzales

2718 S. Ruby St.
Gonzales, LA 70737
225.644.1331
225.647.1332 fax
888.INSCO.12

Houston

11922 Cutten Rd
Houston, TX 77066
281.893.8870
281.893.9247 fax
800.899.3163

Longview

414 E. Loop 281#8
Longview, TX 75605
903.291.0232
903.291.0316 fax
800.753.9445

New Orleans

2419 Delaware Ave.
Kenner, LA 70062
504.469.6432
504.468.9474 fax
800.999.5788

Odessa

1904 W. 3rd St
Odessa, TX 79763
432.337.4737
432.333.9939 fax
800.400.4282

Oklahoma City

6005 N.W. 63rd St, #600
Oklahoma City, TX 73132
405.621.5891
405.621.5884 fax
888.388.7724

Tulsa

5710 E. Admiral Blvd
Tulsa, OK 74115
918.838.9987
918.838.1989 fax
888.388.7724